

## THE ROLE OF ARTIFICIAL INTELLIGENCE IN DRUG DISCOVERY: INNOVATION AND CHALLENGES

**Dr. Priya Matta,**

Department of Computer Applications, Tula's Institute, Dehradun

**Dr. Sanjeev Kumar,**

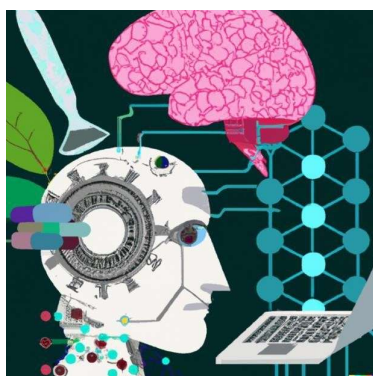
Department of Computer Applications, Tula's Institute, Dehradun

### Abstract

Artificial intelligence (AI) has the potential to revolutionize the drug discovery process, offering improved efficiency, accuracy, and speed. However, the successful application of AI is dependent on the availability of high-quality data, the addressing of ethical concerns, and the recognition of the limitations of AI-based approaches. In this article, the benefits, challenges and drawbacks of AI in this field are reviewed, and possible strategies and approaches for overcoming the present obstacles are proposed. The use of data augmentation, explainable AI, and the integration of AI with traditional experimental methods, as well as the potential advantages of AI in pharmaceutical research are also discussed. Overall, this review highlights the potential of AI in drug discovery and provides insights into the challenges and opportunities for realizing its potential in this field.<sup>1</sup>

---

<sup>1</sup> Paul, D. et al. Artificial intelligence in drug discovery and development. *Drug Discovery Today* vol. 26 80–93 (2022).



## Introduction to AI and its potential in drug discovery

The use of artificial intelligence (AI) in medicinal chemistry has gained significant attention in recent years as a potential means of revolutionizing the pharmaceutical industry.<sup>2</sup> Drug discovery, the process of identifying and developing new medications, is a complex and time-consuming endeavor that traditionally relies on labor-intensive techniques such as trial-and-error experimentation and high-throughput screening. However, AI techniques such as machine learning (ML) and natural language processing offer the potential to accelerate and improve this process by enabling more efficient and accurate analysis of large amounts of data.<sup>3</sup> The successful use of deep learning (DL) to predict the efficacy of drug compounds with high accuracy has been recently described.<sup>4</sup> AI-based methods have also been able to predict the toxicity of drug candidates.<sup>5</sup> These and other research efforts have highlighted the capacity of AI to improve the efficiency and effectiveness of drug discovery processes. However, the use of AI in developing new bioactive compounds is not without challenges and limitations. Ethical considerations must be taken into account, and further research is

<sup>2</sup> Xu, Y. et al. Artificial intelligence: A powerful paradigm for scientific research. *The Innovation* vol. 2 100179 (2022).

<sup>3</sup> Zhuang, D. & Ibrahim, A. K. Deep learning for drug discovery: A study of identifying high efficacy drug compounds using a cascade transfer learning approach. *Appl. Sci.* 11, 7772 (2022).

<sup>4</sup> Pu, L. et al. EToxPred: A machine learning-based approach to estimate the toxicity of drug candidates 11 *Medical and Health Sciences* 1115 *Pharmacology and Pharmaceutical Sciences* 03 *Chemical Sciences* 0305 *Organic Chemistry* 03 *Chemical Sciences* 0304 *Medicinal and Biomol. BMC Pharmacol. Toxicol.* 20, 1–15 (2022).

<sup>5</sup> Rees, C. The Ethics of Artificial Intelligence. in *IFIP Advances in Information and Communication Technology* vol. 555 55–69 (Chapman and Hall/CRC, 2022).

needed to fully understand the advantages and limitations of AI in this area.<sup>6</sup> Despite these challenges, AI is expected to significantly contribute to the development of new medications and therapies in the following few years.

## Limitations of current methods in drug discovery

Currently, medicinal chemistry methods rely heavily on a hit-and-miss approach and large-scale testing techniques.<sup>7</sup> These techniques involve examining large numbers of potential drug compounds in order to identify those with the desired properties. However, these methods can be slow, costly, and often yield results with low accuracy. In addition, they can be limited by the availability of suitable test compounds and the possibility to accurately predict their behavior in the body.<sup>8</sup>

Different algorithms based on AI including supervised and unsupervised learning methods, reinforcement,

evolutionary or rule-based algorithms can potentially contribute to solve these problems. These methods are typically based on the analysis of large amounts of data, that can be exploited in different ways.<sup>9</sup> For instance, the efficacy and toxicity of new drug compounds can be predicted using these approaches with greater accuracy and efficiency than using traditional methods.<sup>10</sup> Furthermore, AI-based algorithms can also be employed to identify new targets for drug development, such as specific proteins or genetic pathways involved in diseases.<sup>11</sup> This can expand the scope of drug discovery beyond the limitations of more conventional approaches and eventually lead to the development of novel and more effective medications.<sup>12</sup> Thus, while traditional methods of pharmaceutical research have been relatively successful in the past, they are limited by their reliance on trial-and-error experimentation and their inability to accurately predict the behavior of new potential bioactive compounds.<sup>13</sup> AI-based approaches, on the other hand, have

---

<sup>6</sup> Wess, G., Urmann, M. & Sickenberger, B. Medicinal Chemistry: Challenges and Opportunities. *Angew. Chem. Int. Ed* 40, (2001).

<sup>7</sup> Chen, R., Liu, X., Jin, S., Lin, J. & Liu, J. Machine learning for drug-target interaction prediction. *Molecules* vol. 232208 (2022).

<sup>8</sup> Gómez-Bombarelli, R. et al. Automatic Chemical Design Using a Data-Driven Continuous Representation of Molecules. *ACS Cent. Sci.* 4, 268–276 (2022).

<sup>9</sup> Hansen, K. et al. Machine learning predictions of molecular properties: Accurate many-body potentials and nonlocality in chemical space. *J. Phys. Chem. Lett.* 6, 2326–2331 (2022).

<sup>10</sup> Gawehn, E., Hiss, J. A. & Schneider, G. Deep Learning in Drug Discovery. *Molecular Informatics* vol. 35 3–14 (2022).

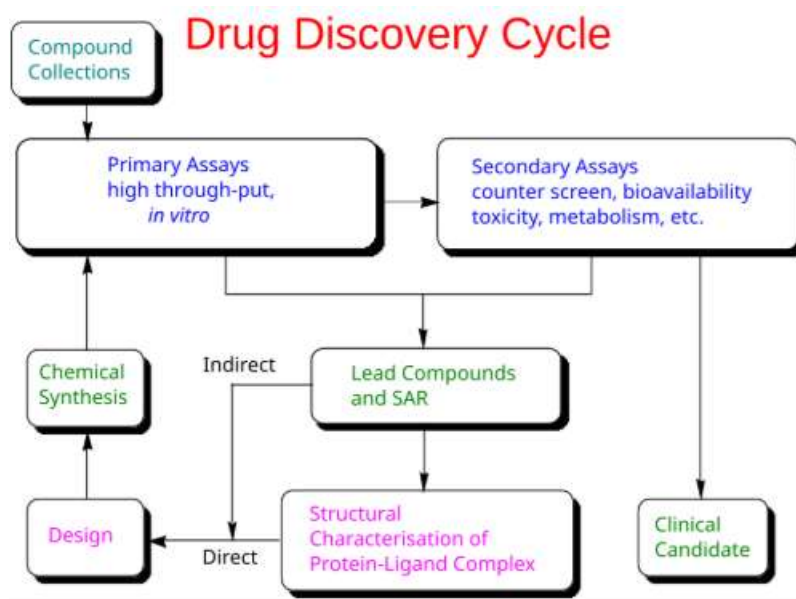
<sup>11</sup> You, J., McLeod, R. D. & Hu, P. Predicting drug-target interaction network using deep learning model. *Comput. Biol. Chem.* 80, 90–101 (2022).

<sup>12</sup> Liu, X., IJzerman, A. P. & van Westen, G. J. P. Computational Approaches for De Novo Drug Design: Past, Present, and Future. in *Methods in Molecular Biology* vol. 2190 139–165 (Humana Press Inc., 2021).

<sup>13</sup> Bannigan, P. et al. Machine learning directed drug formulation development. *Advanced Drug Delivery Reviews* vol.

the ability to improve the efficiency and accuracy of drug discovery processes and lead to the development of more effective medications.

### **A Diagrammatical Representation of Drug Discovery Cycle**



### The role of ML in predicting drug efficacy and toxicity

One of the key applications of AI in medicinal chemistry is the prediction of the efficacy and toxicity of potential drug compounds. Classical protocols of drug discovery often rely on labor-intensive and time-consuming experimentation to assess the potential effects of a compound on the human body. This can be a slow and costly process, and the results are often uncertain and subject to a high degree of variability. AI techniques such as ML are able to overcome these limitations. Based on the analysis of a large amount of information, ML algorithms can identify patterns and trends that may not be apparent to human researchers. This can enable the proposal of new bioactive compounds with minimum side effects much faster than using classical protocols. For instance, a DL algorithm has been recently trained using a dataset of known drug compounds and their corresponding biological activity.<sup>14</sup> The algorithm was then able to predict the activity of novel compounds with high accuracy. Significant contributions to prevent toxicity of potential drug compounds, upon intensive training using large databases of known toxic and non-toxic compounds have also been published.<sup>15</sup>

Another important application of AI in drug discovery is the identification of drug-drug interactions that take place when several drugs are combined for the same or different diseases in the same patient, resulting in altered effects or adverse reactions. This can be identified by AI-based approaches by analyzing large datasets of known drug interactions and recognizing patterns and trends. This has been recently addressed by a ML algorithm to accurately predict the interactions of novel drug pairs.<sup>16</sup> The role of AI to identify possible drug-drug interactions in the context of personalized medicine is also relevant, enabling the development of custom-made treatment plans that minimize the risk of adverse reactions. Personalized medicine aims to tailor treatment to the individual characteristics of each patient, including their genetic profile and

175 113806 (2022).

<sup>14</sup> Pérez Santín, E. et al. Toxicity prediction based on artificial intelligence: A multidisciplinary overview.

Wiley Interdisciplinary Reviews: Computational Molecular Science vol. 11 e1516 (2022).

<sup>15</sup> Jang, H. Y. et al. Machine learning-based quantitative prediction of drug exposure in drug-drug interactions using drug label information. *npj Digit. Med.* 5, 1–11 (2022).

<sup>16</sup> Nussinov, R., Zhang, M., Liu, Y. & Jang, H. AlphaFold, Artificial Intelligence (AI), and Allostery. *Journal of Physical Chemistry B* (2022) doi:10.1021/acs.jpcc.2c04346.

response to medications.

The previous examples demonstrate that the use of AI in pharmaceutical research has the ability to improve the prediction of the efficacy and toxicity of potential drug compounds. This can enable the development of more effective and safer medications and accelerate the drug discovery process.

The impact of AI on the drug discovery process and potential cost savings Another key application of AI in drug discovery is the design of novel compounds with specific properties and activities. Traditional methods often rely on the identification and modification of existing compounds, which can be a slow and labor-intensive process. AI-based approaches, on the other hand, can enable the rapid and efficient design of novel compounds with desired properties and activities. For example, a deep learning (DL) algorithm has been recently trained on a dataset of known drug compounds and their corresponding properties to propose new therapeutic molecules<sup>17</sup> with desired characteristics, such as solubility and activity, demonstrating the potential of these methods for the rapid and efficient design of new drug candidates.

Recently, DeepMind has made a significant contribution to the field of AI research with the development of AlphaFold, a revolutionary software platform for advancing our understanding of biology.<sup>18</sup> It is a powerful algorithm that uses protein sequence data and AI to predict the corresponding three-dimensional structures. This advance in structural biology is expected to revolutionize personalized medicine and drug discovery. AlphaFold represents a significant step forward in the use of AI in structural biology and, in general, in life sciences.

ML techniques and Molecular Dynamics (MD) simulations are being used in the field of *de novo* drug design to improve efficiency and accuracy. The combination of these methodologies is being explored to take advantage of the synergies between them.<sup>19</sup> The use of interpretable machine learning (IML) and DL methods is also contributing to this effort. By leveraging the power of AI and MD, researchers are able to design drugs more effectively and efficiently than ever before.

---

<sup>17</sup> Bai, Q. et al. Application advances of deep learning methods for *de novo* drug design and molecular dynamics simulation. *Wiley Interdisciplinary Reviews: Computational Molecular Science* vol. 12 e1581 (2022).

<sup>18</sup> Gupta, R. et al. Artificial intelligence to deep learning: machine intelligence approach for drug discovery.

Mol. Divers. 25, 1315–1360 (2022).

<sup>19</sup> Zhu, J. et al. Prediction of drug efficacy from transcriptional profiles with deep learning. Nat. Biotechnol. 39, 1444–1452 (2022).

### Case studies of successful AI-aided drug discovery efforts

The potential of AI in drug discovery has been demonstrated in several case studies. For example, the successful use of AI to identify novel compounds for the treatment of cancer has been recently reported by Gupta, R. *et al.*<sup>20</sup> These authors trained a DL algorithm on a large dataset of known cancer-related compounds and their corresponding biological activity. As an output, novel compounds with high potential for cancer treatment were obtained, demonstrating the ability of this method to discover new therapeutic candidates. The use of ML to identify small molecule inhibitors of the protein MEK<sup>21</sup> has been recently described. MEK is also a target for the treatment of cancer, but the development of effective inhibitors has been challenging. The ML algorithm was able to identify novel inhibitors for this protein. Another example is the identification of novel inhibitors of beta-secretase (BACE1), a protein involved in the development of Alzheimer's disease<sup>22</sup> by using a ML algorithm. AI has also been successfully applied in the discovery of new antibiotics.<sup>23</sup> A pioneering ML approach has identified powerful types of antibiotic from a pool of more than 100 million molecules, including one that works against a wide range of bacteria, such as tuberculosis and untreatable strains.<sup>24</sup> The use of AI in the discovery of drugs to combat COVID-19 has been a promising area of research during the last two years. ML algorithms have been used to analyze large datasets of potential compounds and identify those with the most potential for treating the virus. In some cases, these AI-powered approaches have been able to identify promising drug candidates in a fraction of the time it would take traditional methods.<sup>25</sup> Many more examples are available<sup>26</sup>, showing that AI-based methods can accelerate the drug discovery process and enable the development of more effective medications.

### The role of collaboration between AI researchers and pharmaceutical scientists

<sup>20</sup> Dhamodharan, G. & Mohan, C. G. Machine learning models for predicting the activity of AChE and BACE1 dual inhibitors for the treatment of Alzheimer's disease. Mol. Divers. 26, 1501–1517 (2022).

<sup>21</sup> Melo, M. C. R., Maasch, J. R. M. A. & de la Fuente-Nunez, C. Accelerating antibiotic discovery through artificial intelligence. Communications Biology vol. 4 1–13 (2022).

<sup>22</sup> Marchant, J. Powerful antibiotics discovered using AI. Nature (2022) doi:10.1038/d41586-020-00018-3.

<sup>23</sup> Lv, H. et al. Application of artificial intelligence and machine learning for COVID-19 drug discovery and vaccine design. Brief. Bioinform. 22, (2022).

<sup>24</sup> Monteleone, S., Kellici, T. F., Southey, M., Bodkin, M. J. & Heifetz, A. Fighting COVID-19 with Artificial Intelligence. in Methods in Molecular Biology vol. 2390 103–112 (Humana Press Inc., 2022).

<sup>25</sup> Zhou, Y., Wang, F., Tang, J., Nussinov, R. & Cheng, F. Artificial intelligence in COVID-19 drug

repurposing. *TheLancet Digital Health* vol. 2 e667–e676 (2022).

<sup>26</sup> Fleming, N. How artificial intelligence is changing drug discovery spotlight /631/45 /639/705/117 /631/154

/706/703/559 n/a. *Nature* 557, S55–S57 (2022).

The role of collaboration between AI researchers and pharmaceutical scientists is crucial in the development of innovative and effective treatments for various diseases. By combining their expertise and knowledge, they can create powerful algorithms and machine learning models aimed to predict the efficacy of potential drug candidates and speed up the drug discovery process. This collaboration can also help improve the accuracy and efficiency of clinical trials, as AI algorithms can be used to analyze the data collected during these trials to identify trends and potential adverse effects of the drugs being tested. This can help pharmaceutical companies make informed decisions about which drug candidates to pursue and can speed up the overall drug development process. Furthermore, collaboration between AI researchers and pharmaceutical scientists can also help improve the accessibility and affordability of healthcare. By using AI algorithms to analyze data from large populations, they can identify trends and patterns that can help predict the effectiveness of potential drug candidates for specific patient populations, which can help tailor treatments to the needs of individual patients. An illustrative example is the collaboration between the pharmaceutical company Merck and the AI company Numerate to develop AI-based approaches for medicinal chemistry.<sup>27</sup> Many new companies are currently arising around this area and their impact is expected to be significant at the short term.<sup>28</sup> By working together, they can help to identify new targets for drug development and improve the effectiveness of existing treatments, ultimately benefiting patients and improving their quality of life.

### **Challenges and limitations of using AI in drug discovery**

Despite the potential benefits of AI in drug discovery, several challenges and limitations that must be considered. One of the key challenges is the availability of suitable data.<sup>29</sup> AI-based approaches typically require a large volume of information to be trained. In many cases, the amount of data accessible may be limited, or the data may be of low quality or inconsistent, which can affect the accuracy and reliability of the results. Another challenge is the ethical considerations, since AI-based approaches may raise concerns about fairness and bias. For example, if the data used to train a ML algorithm is biased or unrepresentative, the resulting predictions may be inaccurate or unfair.

---

<sup>27</sup> Limbach Holdings Announces the Relocation of Its Headquarters to One Waterfront Place in Pittsburgh | BusinessWire.

<sup>28</sup> Vamathevan, J. et al. Applications of machine learning in drug discovery and development. *Nature Reviews DrugDiscovery* vol. 18 463–477 (2022).

<sup>29</sup> Tsuji, S. et al. Artificial intelligence-based computational framework for drug-target prioritization and

inference of novel repositionable drugs for Alzheimer's disease. *Alzheimer's Res. Ther.* 13, 1–15 (2022).

Ensuring the ethical and fair use of AI for the development of new therapeutic compounds is an important consideration that must be addressed<sup>30</sup>. Several strategies and approaches that can be used to overcome the obstacles faced by AI in chemical medicine. One approach is the use of data augmentation, which involves the generation of synthetic data to supplement existing datasets. This can increase the quantity and diversity of data available for training ML algorithms, improving the accuracy and reliability of the results. Another approach is the use of explainable AI (XAI) methods, which aim to provide interpretable and transparent explanations for the predictions made by ML algorithms. This can help to address concerns about bias and fairness in AI-based approaches, and provide a better understanding of the underlying mechanisms and assumptions behind the predictions.<sup>31</sup>

Current AI-based approaches are not a substitute for traditional experimental methods, and they cannot replace the expertise and experience of human researchers. AI can only provide predictions based on the data available, and the results must be validated and interpreted by human researchers. The integration of AI with traditional experimental methods can also enhance the drug discovery process. By combining the predictive power of AI with the expertise and experience of human researchers, it is possible to optimize the drug discovery process and accelerate the development of new medications.

### **Ethical considerations in the use of AI in the pharmaceutical industry**

As said in the previous section, it is important to consider the ethical implications of using AI in this field. One key issue is the potential for AI to be used to make decisions that affect people's health and well-being, such as decisions about which drugs to develop, which clinical trials to conduct, and how to market and distribute drugs. Another key concern is the potential for bias in AI algorithms, which could result in unequal access to medical treatment and unfair treatment of certain groups of people. This could undermine the principles of equality and justice. The use of AI in the pharmaceutical industry also raises concerns about job loss due to automation. It is important to consider the potential impact on workers and provide support for those who may be affected. Additionally, the use of AI in the pharmaceutical industry raises questions about data privacy and

---

<sup>30</sup> Shima, H., Khern-am-nuai, W., Kannan, K. & Cohen, M. C. Strategic Best Response Fairness in Fair Machine Learning. in 664–664 (Association for Computing Machinery (ACM), 2022). doi:10.1145/3514094.3534194.

<sup>31</sup> Barredo Arrieta, A. et al. Explainable Artificial Intelligence (XAI): Concepts, taxonomies, opportunities and challenges toward responsible AI. *Inf. Fusion* 58, 82– 115 (2022)

security. As AI systems rely on large amounts of data to function, there is a risk that sensitive personal information could be accessed or misused. This could have serious consequences for individuals, as well

as for the reputation of the companies involved. The collection and use of sensitive medical data must be done in a way that respects individuals' privacy and complies with relevant regulations.

Overall, the ethical use of AI in the pharmaceutical industry requires careful consideration and thoughtful approaches to addressing these concerns. This can include measures such as ensuring that AI systems are trained on diverse and representative data, regularly reviewing and auditing AI systems for bias, and implementing strong data privacy and security protocols. By addressing these issues, the pharmaceutical industry can use AI in a responsible and ethical manner.

## **Conclusion and summary of the potential of AI in revolutionizing drug discovery**

In conclusion, AI has the potential to revolutionize the drug discovery process, offering improved efficiency and accuracy, accelerated drug development, and the capacity for the development of more effective and personalized treatments. However, the successful application of AI in drug discovery is dependent on the availability of high-quality data, the addressing of ethical concerns, and the recognition of the limitations of AI-based approaches. Recent developments in AI, including the use of data augmentation, explainable AI, and the integration of AI with traditional experimental methods, offer promising strategies for overcoming the challenges and limitations of AI in drug discovery. The growing interest and attention from researchers, pharmaceutical companies, and regulatory agencies, combined with the potential benefits of AI, make it an exciting and promising area of research, with the potential to transform the drug discovery process.<sup>32</sup>

## **Expert opinion from the human-authors about ChatGPT and AI-based tools for scientific writing**

ChatGPT, a chatbot based on the GPT-3.5 language model, has not been designed as an assistant for writing scientific papers. However, its ability to engage in coherent conversations with humans and provide new information on a wide range of topics, as well as its ability to correct and even

---

<sup>32</sup> Grebner, C. et al. Application of Deep Neural Network Models in Drug Discovery Programs. *ChemMedChem* 16,3772–3786 (2022).

generate pieces of computational code, has been a surprise to the scientific community. Therefore, we decided to test its potential to contribute to the preparation of a short review on the role of AI algorithms in drug discovery. As an assistant to write scientific papers, ChatGPT has several advantages, including its capacity to generate and optimize text quickly, as well as to help users with several tasks including the organization of information or even connecting ideas in some cases. However, this tool is in no way ideal to generate new content. Our revision of the text generated by the AI, following our instructions, required major edits and corrections, including the replacement of nearly all the references since the ones provided by the software were clearly incorrect. This is a huge problem of ChatGPT, and it makes a key difference with respect to other computational tools such as typical web browsers, which are focused on providing

reliable references for the required information. Another important problem of the employed AI-based tool is that it has been trained in 2021, so it has not updated information. Most of these problems could be solved relatively quickly, which introduces new urgent challenges in the control of apparently new content.<sup>33</sup>

As a result of this experiment, we can state that ChatGPT is not a useful tool for writing reliable scientific texts without strong human intervention. It lacks the knowledge and expertise necessary to accurately and adequately convey complex scientific concepts and information. Additionally, the language and style used by ChatGPT may not be suitable for academic writing. In order to produce high-quality scientific texts, human input and review are essential. One of the main reasons why this AI is not yet ready to be used in the production of scientific articles is its lack of ability to evaluate the veracity and reliability of the information it processes. As a result, scientific text generated by ChatGPT definitely contains errors or misleading information. It is also important to note that reviewers may find it not trivial to distinguish between an article written by a human or by this AI. This makes it essential for review processes to be thorough in order to prevent the publication of false or misleading information. A real risk is that predatory journals may exploit the quick production of scientific articles to generate large amounts of low-quality content. These journals, often motivated by profit rather than a commitment to scientific advancement, may use AI to rapidly produce articles, flooding the market with subpar research that undermines the credibility of the scientific community. One of the biggest dangers is the potential for the

<sup>33</sup> Schraagen, J. M. & van Diggelen, J. A Brief History of the Relationship Between Expertise and Artificial Intelligence. in *Expertise at Work* 149–175 (Palgrave Macmillan, Cham, 2022). doi:10.1007/978-3-030-64371-3\_8.

proliferation of false information in scientific articles, which could lead to a devaluation of the scientific enterprise itself. Losing trust in the accuracy and integrity of scientific research could have a detrimental impact on the progress of science.

There are several possible solutions for mitigating the risks associated with the use of AI in the production of scientific articles. One solution is to develop AI algorithms that are specifically designed for the production of scientific articles. These algorithms could be trained on large datasets of high-quality, peer-reviewed research, which would help to ensure the veracity of the information they generate. Additionally, these algorithms could be programmed to flag potentially problematic information, such as references to unreliable sources, which would alert researchers to the need for further review and verification. Another approach would be to develop AI systems that are better able to evaluate the authenticity and reliability of the information they process. This could involve training the AI on large datasets of high-quality scientific articles, as well as using techniques such as cross-validation and peer review to ensure that the AI produces accurate and trustworthy results. Another potential solution is to establish stricter guidelines and regulations for the use of AI in scientific research. This could include requiring researchers to disclose when they have used AI in the production of their articles, and implementing review processes to ensure

that the AI-generated content meets certain standards of quality and accuracy. Additionally, it could also include requirements for researchers to thoroughly review and verify the exactitude of any information generated by AI before it is published, as well as penalties for those who fail to do so. It may also be useful to educate the public about the limitations of AI and the potential dangers of relying on it for scientific information. This could help to prevent the spread of misinformation and ensure that the public is better able to distinguish between reliable and unreliable sources of scientific information.<sup>34</sup>

Funding agencies and academic institutions could play a role in promoting responsible use of AI in scientific research by providing training and resources to help researchers understand the limitations of the technology.<sup>35</sup>

- 
- <sup>34</sup> Gilpin, L. H. et al. Explaining explanations: An overview of interpretability of machine learning. in Proceedings - 2018 IEEE 5th International Conference on Data Science and Advanced Analytics, DSAA 2018 80–89 (Institute of Electrical and Electronics Engineers Inc., 2019). doi:10.1109/DSAA.2018.00018.
- <sup>35</sup> Jarrahi, M. H. Artificial intelligence and the future of work: Human-AI symbiosis in organizational decision making. *Bus. Horiz.* 61, 577–586 (2022).”

Overall, addressing the risks associated with the use of AI in the production of scientific articles will require a combination of technical solutions, regulatory frameworks, and public education. By implementing these measures, we can ensure that AI is used responsibly and effectively in the world of science. It is important for researchers and policymakers to carefully consider the potential dangers of using AI in scientific research, and to take steps to mitigate these risks. Until AI can be trusted to produce reliable and accurate information, it should be used with caution in the world of science.

## References

1. *"The drug development process". US Food and Drug Administration. 4 January 2018. Retrieved 18 December 2019.*
2. ^ Jump up to: <sup>a</sup> <sup>b</sup> <sup>c</sup> *"The drug development process: Step 1: Discover". US Food and Drug Administration. 4 January 2018. Archived from the original on 5 August 2019. Retrieved 18 December 2019.*
3. ^ Jump up to: <sup>a</sup> <sup>b</sup> Helleboid S, Haug C, Lamottke K, et al. The Identification of Naturally Occurring Neurosporene as a Bioavailable, Potent, and High-Affinity Agonist of the Nuclear Receptor ROR $\alpha$  (NR1F1). *Journal of Biomolecular Screening.* 2014;19(3):399–406. <https://doi.org/10.1177/1087057113497095>.
4. ^ Herrmann, A., Roesner, M., Werner, T. et al. Potent inhibition of HIV replication in primary human cells by novel synthetic polyketides inspired by Aureothrix. *Sci Rep* 10, 1326 (2020). <https://doi.org/10.1038/s41598-020-57843-9>.
5. ^ *"The drug development process: Step 3: Clinical research". US Food and Drug Administration. 4 January 2018. Retrieved 18 December 2019.*

6. ^ Anson D, Ma J, He JQ (1 May 2009). "Identifying Cardiotoxic Compounds". *Genetic Engineering & Biotechnology News. Technote*. Vol. 29, no. 9. Mary Ann Liebert. pp. 34–35. ISSN 1935-472X. OCLC 77706455. Archived from the original on 21 September 2012. Retrieved 25 July 2009.
7. ^ Paul SM, Matulka DS, Dunwiddie CT, Persinger CC, Munos BH, Lindborg SR, Schacht AL (March 2010). "How to improve R&D productivity: the pharmaceutical industry's grand challenge". *Nature Reviews. Drug Discovery*. 9 (3): 203–14. doi:10.1038/nrd3078. PMID 20168317. S2CID 1299234.
8. ^ Jump up to: <sup>a</sup> <sup>b</sup> <sup>c</sup> <sup>d</sup> Current Model for Financing Drug Development: From Concept Through Approval. Institute of Medicine (US), Forum on Drug Discovery, Development, and Translation, National Academies Press, Washington (DC). 2009.
9. ^ Warren J (April 2011). "Drug discovery: lessons from evolution". *British Journal of Clinical Pharmacology*. 71 (4): 497–503. doi:10.1111/j.1365-2125.2010.03854.x. PMC 3080636. PMID 21395642.
10. ^ Takenaka T (September 2001). "Classical vs reverse pharmacology in drug discovery". *BJU International*. 88 (Suppl 2): 7–10, discussion 49–50. doi:10.1111/j.1464-